



HOMBACH

We perform different

Are you looking for a **sustainable and future-proof** solution for all the different versions of rail transport cladding?

Hombach has been a supplier and innovation partner for rail transport for many years.





Future-proof Twin-Sheet forming technology means sustainability for rail transport!

Maximum recyclability

- The thermoplastic materials we use are highly recyclable.

Weight reduction

- The Twin-Sheet process produces rigid hollow body parts. The low density of the material of approx. 1.35g/cm^3 guarantees you get lightweight assemblies that can be handled easily by one person.

Precise integration options

- Fastenings/connections/retaining plates can be integrated into the Twin-Sheet procedure. This means you get 100% dimensional accuracy from part to part, and a professional design too.

High level of 3D design freedom and functionality

- The Thermoforming and Twin-Sheet procedure gives you a high degree of creative freedom when it comes to geometries. It is not just the visible side, but the rear is also moulded exactly to size, and the double-shell design means you can vary the design too (e.g. to integrate connections, air ducts and lighting or to mould cable ducts). The installation space behind the panelling can therefore be used/designed highly efficiently as well.

Fire protection standards

- Complying with EN45545 HL3 means that almost every fire protection requirement can be met in the interior.

Examples from our portfolio

Ceiling panelling

Ceiling covers
(including with lighting)

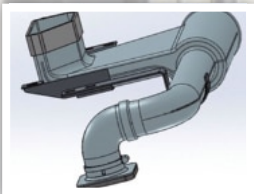
Driver's stand/
desk panelling

Window/side wall
panelling

Air conditioning ducts/
air ducts/air deflectors

Door sill/plinth
panelling

Seat back shells



Complete solutions from design to component assembly, from a single source

Quick to implement and easy to change

- Thermoforming and Twin-Sheet moulds can be produced quickly and cost-effectively. As they are not subject to wear, they give you the highest quality right from the start, but also over the entire life and spare parts cycle of your projects.
- Subsequent changes you may need can also be integrated quickly and easily into the existing tools.

Long-lasting, in the colour of your choice

- The thermoplastic materials we use are designed for decades of use. They are highly resistant to vandalism, come in virtually any colour (patterns/decors are also possible) and can be recycled at end of life as well, using methods already available.

Create different versions with ease

- A wide range of options, such as CNC trimming for the procedure, as well as low-cost tool inserts and adhesive parts, mean that a wide range of different versions can be created using the same tools (e.g. as option with lighting/speakers/passenger counters, etc.).



Who is Hombach – and why choose Hombach? Partner to rail transport for more than 20 years!

- Family-run company into its 3rd generation with approx. 150 employees and 80 years of experience
- Focussed on high-quality components and high customer satisfaction
- Inventor of the European Twin-Sheet technology (1989) based on thermoforming
- System developer for more than 15 years and system supplier for more than 25
- 10 thermoforming and Twin-Sheet systems for component sizes up to 3000mm x 2500mm

- Innovation partner for our rail transport customers
- Comprehensive portfolio of services with a 10-person development department
- Complex component assembly, including electronics, cabling, insulation, sealing & mechanical components
- "Made in Germany" - with you in hours at any time.





HOMBACH


We perform different

ERNST HOMBACH GMBH & CO. KG

Veit-vom-Berg-Str. 24
D - 91486 Uehlfeld

Tel.: + 49 91 63 / 99 83 - 0
Fax: + 49 91 63 / 99 83 - 83

info@hombach-kunststofftechnik.de
www.hombach-kunststofftechnik.de

A photograph showing two men in white shirts working at a table. One man is pointing at a tablet, and the other is writing on a document. A white circular device with the Hombach logo is on the table. The text is overlaid on the left side of the image.

Our experienced, highly motivated team is ready to support you with runs of any size – from single prototypes to full series production.